

2012

BELARUS

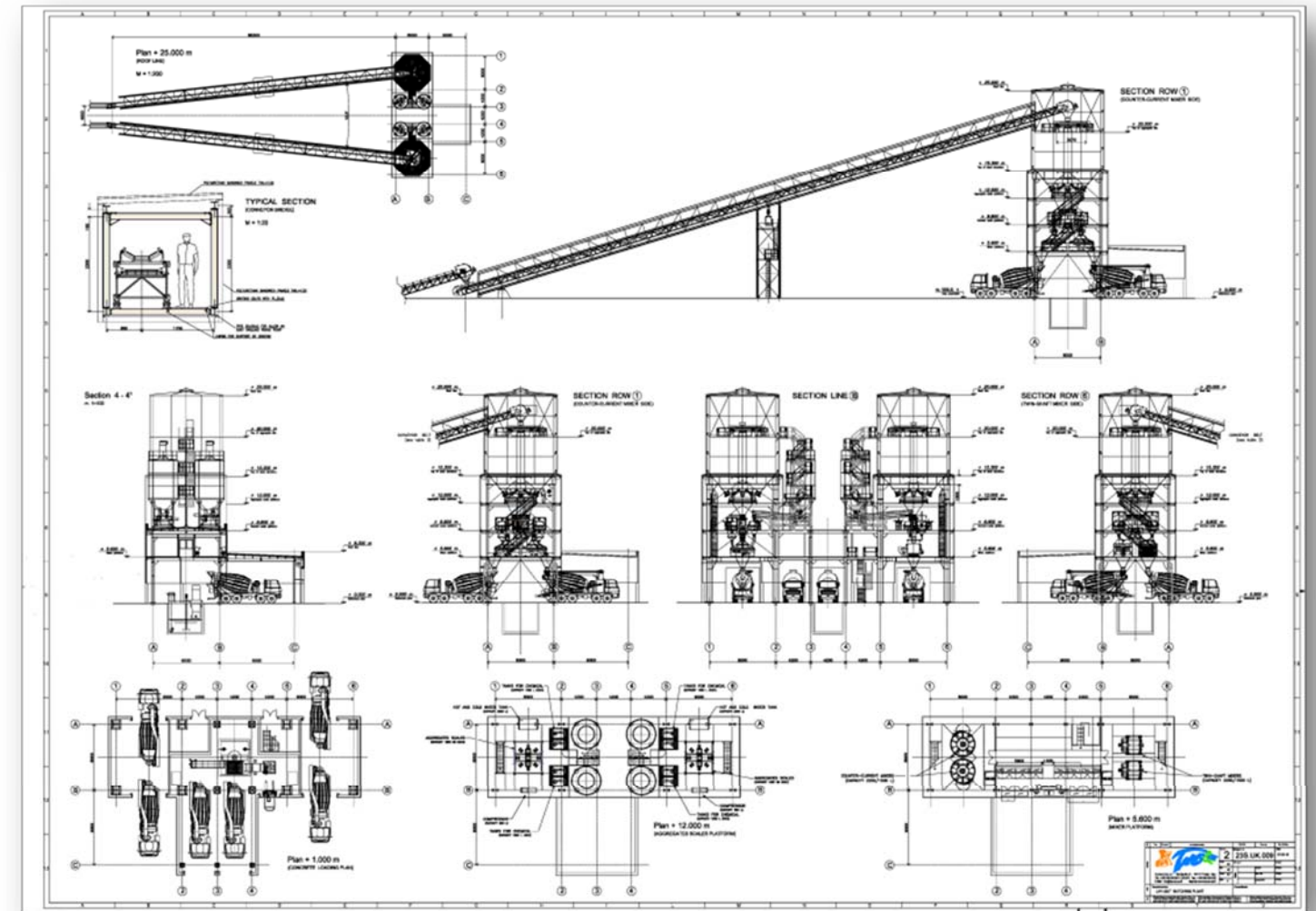
Concrete batching plant for the production of ready-mix concrete for building an atomic power station.

Main technical features:

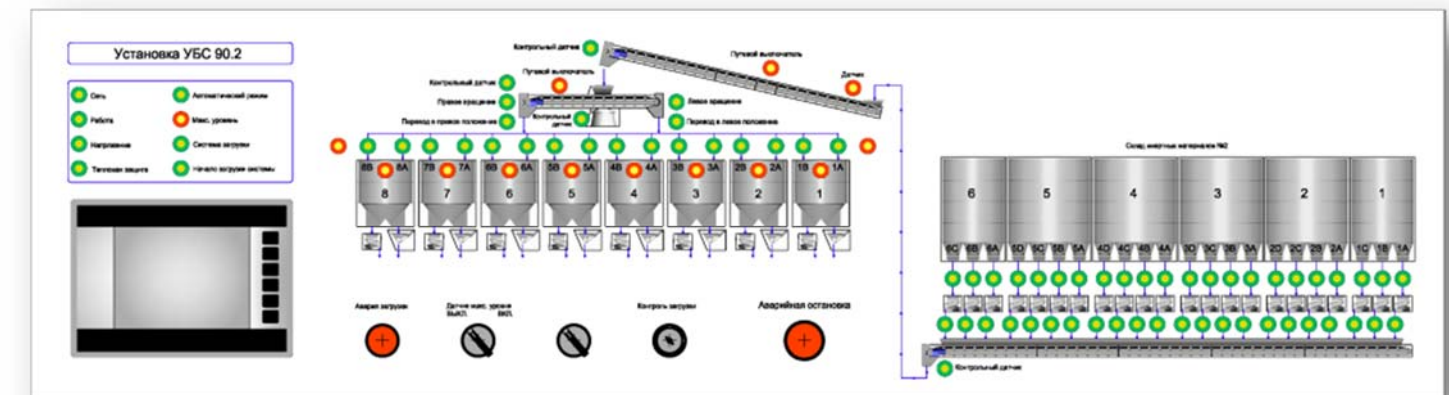
- Max concrete production : 240 cbm/h (for a batch each 1,5 min)
- Countercurrent mixers: 2x2250/1500 lt
- Twin-shaft mixers: 2x2250/1500 lt
- Aggregate silos : 16x30 cbm
- Cement silos : 4x40 cbm
- Additives: 8x1500 lt
- Loading points for truck mixers : 4
- Automatic washing system : 110 bar system :
- Concrete recycling : 12 cbm/h
- Microwave moisture metering of concrete : 4 pcs
- Microwave moisture Metering for sand : 4 pcs
- Insulation panels :
- Wall panels 80 mm : K=0,250
- Roof panels 100+35 mm : K=0,190

Production control system:

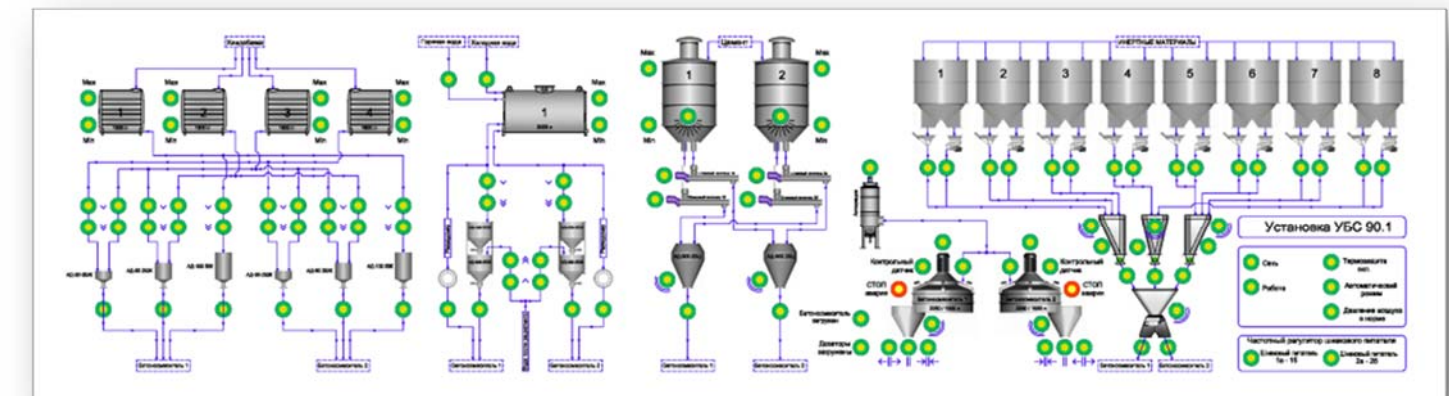
- 1 Software program for aggregate loading : T2008-I
- 1 Software program for dosing and mixing : S2008-M
- 1 Electrical switchboard for the manual and automatic control mode of aggregate filling and storage. All functions carried by PLC and Touch-screen.
- 1 Electrical switchboard for the manual and automatic control mode of dosing and mixing system. All functions carried by PLC and PC
- 2 External control box for the control of mixers.
- 2 External control box for the control of mixer washing.



Lay-out drawing of new batching and distribution plant



Flow-sheet drawing of the aggregates loading plant



Flow-sheet drawing of the batching and concrete distribution plant